

# Saugnäpfe und Saugnapf-Zubehör



## VAKUUM Saugnäpfe

Wir liefern über 200 unterschiedliche Saugnapftypen. Vom Miniatur-Universalsaugnapf für das Handling elektronischer Bauelemente, über Balgsauger mit integriertem Hub, z.B. für Verpackungsmaschinen, Flachsauger für Druckmaschinen, transparente Sauger für Pharma/Food Anwendungen (FDA) bis hin zu großflächigen Saugern für viele hundert kg schwere Bauteile. Wählen Sie außerdem zwischen verschiedenen Werkstoffen. In unserem Programm finden Sie ziemlich sicher den passenden Saugnapf zum günstigen Preis.



**Universal-Saugnäpfe: Seite 18-19**

**Balg-Saugnäpfe: Seite 16-17**

**Flach-Saugnäpfe: Seite 14-15**

### Flach-Saugnäpfe

Flach-Saugnäpfe eignen sich besonders für ebene Flächen, wenn hohe Haltekräfte benötigt werden. Sie bieten wegen ihrer geringeren Verformung eine bessere Positioniergenauigkeit als Universal-Saugnäpfe.

#### Werkstoffe

- NBR: Nitril, ölbeständig und verschleißfest, -20 bis +120°C  
 SIL: Silikon, für höhere Temperaturen, -50 bis +220°C  
 SIL (FDA): Silikon mit Lebensmittelzulassung  
 PVC: verschleißfest, anschmiegsam, 0 bis +55°C  
 PU: Polyurethan, ölbeständig, sehr elastisch 0 bis 65°C

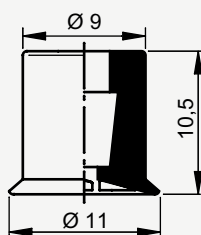
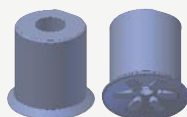
Passende Adapter finden Sie auf Seite 20 dieser Broschüre.



Ø 11

#### Saugnapf V10F

NBR: 111.277  
 SIL: 111.278  
 SIL (FDA): 111.279

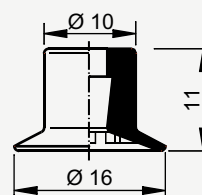


**Passende Adapter:**  
 VA10: 111.334

Ø 16

#### Saugnapf V15F

NBR: 111.280  
 SIL: 111.281  
 SIL (FDA): 111.282

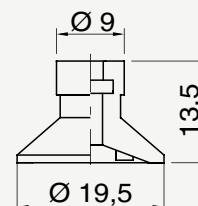


**Passende Adapter:**  
 VA10: 111.334

Ø 19,5

#### Saugnapf VC119

PVC: 111.646  
 PU: 111.647

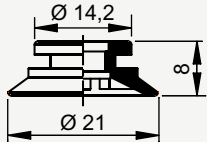


**Passende Adapter:**  
 VCA9: 111.357

Ø 21

**Saugnapf V20F**

NBR: 111.286  
SIL: 111.287  
SIL (FDA): 111.288



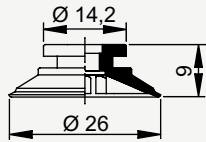
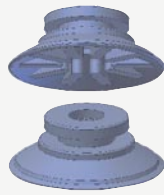
**Passende Adapter:**

VA20: 111.336  
VA20M: 111.337

Ø 26

**Saugnapf V25F**

NBR: 111.289  
SIL: 111.290  
SIL (FDA): 111.291



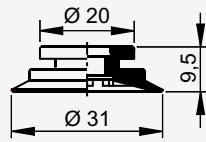
**Passende Adapter:**

VA20: 111.336  
VA20M: 111.337

Ø 31

**Saugnapf V30F**

NBR: 111.295  
SIL: 111.296  
SIL (FDA): 111.297



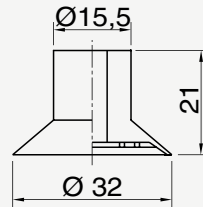
**Passende Adapter:**

VA30: 111.339  
VA30M: 111.340

Ø 32

**Saugnapf VC2C**

PVC: 111.658  
PU: 111.659



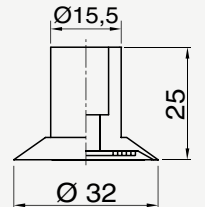
**Passende Adapter:**

VCA8: 111.356

Ø 32

**Saugnapf VC2D**

PVC: 111.662  
PU: 111.663



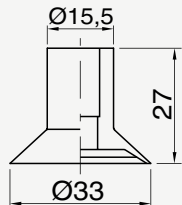
**Passende Adapter:**

VCA7: 111.355

Ø 33

**Saugnapf VC2EH**

PVC: 111.666  
PU: 111.667



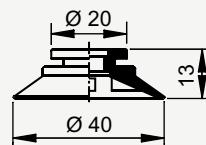
**Passende Adapter:**

VCA7: 111.355

Ø 40

**Saugnapf V40F**

NBR: 111.301  
SIL: 111.302  
SIL (FDA): 111.303



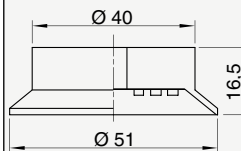
**Passende Adapter:**

VA30: 111.339  
VA30M: 111.340

Ø 51

**Saugnapf VC59**

PVC: 111.686  
PU: 111.687

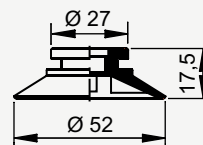


**Zum Aufstecken auf  
Rohr Ø 8-9 mm**

Ø 52

**Saugnapf V50F**

NBR: 111.307  
SIL: 111.308  
SIL (FDA): 111.309



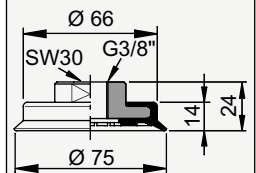
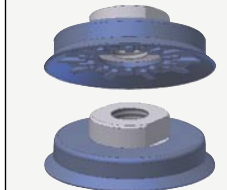
**Passende Adapter:**

VA50: 111.342  
VA50M: 111.343

Ø 75

**Saugnapf V75F**

NBR: 111.310  
SIL: 111.311

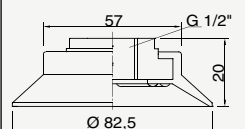


**Mit eingegossenem  
Adapter (Aluminium)**

Ø 82

**Saugnapf VC27A**

PVC: 111.818  
PU: 111.819

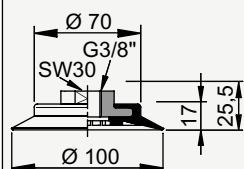
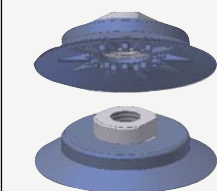


**Mit eingegossenem  
Adapter**

Ø 100

**Saugnapf V100F**

NBR: 111.313  
SIL: 111.314

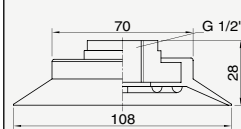


**Mit eingegossenem  
Adapter (Aluminium)**

Ø 108

**Saugnapf VC27**

PVC: 111.814  
PU: 111.815

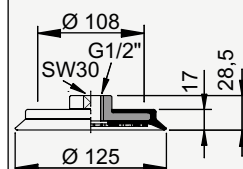
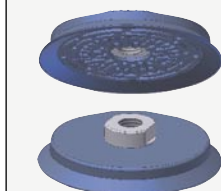


**Mit eingegossenem  
Adapter**

Ø 125

**Saugnapf V125F**

NBR: 111.316  
SIL: 111.317

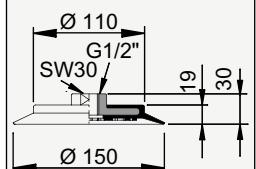
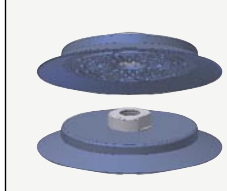


**Mit eingegossenem  
Adapter (Aluminium)**

Ø 150

**Saugnapf V150F**

NBR: 111.319  
SIL: 111.320



**Mit eingegossenem  
Adapter (Aluminium)**

# Balg-Saugnapfe

Balg-Saugnapfe bieten eine integrierte Hub-Funktion. Sie können Lagetoleranzen der zu greifenden Fläche ausgleichen und werden zum Vereinzeln von Teilen genutzt. Sie eignen sich für ebene und leicht gewölbte Oberflächen.

## Werkstoffe

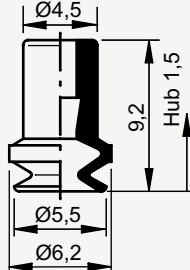
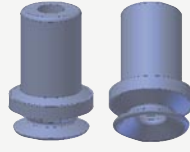
- NBR:** Nitril, ölbeständig und verschleißfest, -20 bis +120°C  
**SIL:** Silikon, für höhere Temperaturen, -50 bis +220°C  
**SIL (FDA):** Silikon mit Lebensmittelzulassung  
**SIL (AS):** Antistatisches Silikon (z.B. zur Platinenbestückung)  
**PVC:** verschleißfest, anschmiegsam, 0 bis +55°C  
**PU:** Polyurethan, ölbeständig, sehr elastisch 0 bis 65°C

Passende Adapter finden Sie auf Seite 20 dieser Broschüre. ➔

Ø 5

## Saugnapf V5B

**NBR:** 111.214  
**SIL (FDA):** 111.215  
**SIL (AS):** 111.216

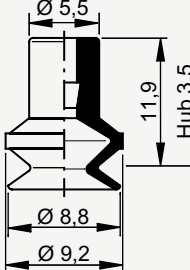
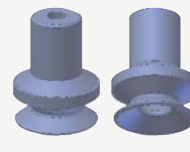


**Passende Adapter:**  
**VA4:** 111.333

Ø 8

## Saugnapf V8B

**NBR:** 111.217  
**SIL (FDA):** 111.218  
**SIL (AS):** 111.219

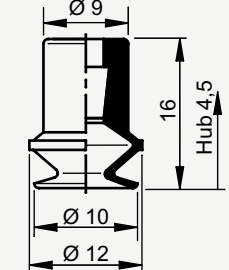


**Passende Adapter:**  
**VA4:** 111.333

Ø 10

## Saugnapf V10B

**NBR:** 111.220  
**SIL:** 111.221  
**SIL (FDA):** 111.222

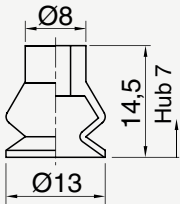


**Passende Adapter:**  
**VA10:** 111.334

Ø 13

## Saugnapf VCB3

**PVC:** 111.564  
**PU:** 111.565

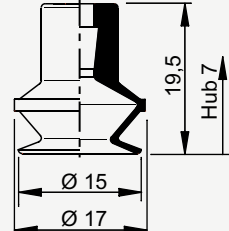


**Passende Adapter:**  
**VCA3:** 111.351

Ø 15

## Saugnapf V15B

**NBR:** 111.226  
**SIL:** 111.227  
**SIL (FDA):** 111.228

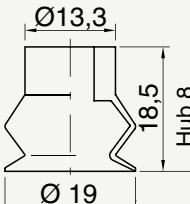


**Passende Adapter:**  
**VA10:** 111.334

Ø 19

## Saugnapf VCB2

**PVC:** 111.560  
**PU:** 111.561

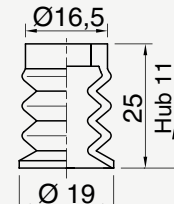


**Passende Adapter:**  
**VCA22:** 111.368

Ø 19

## Saugnapf VC33A5

**PVC:** 111.590  
**PU:** 111.591

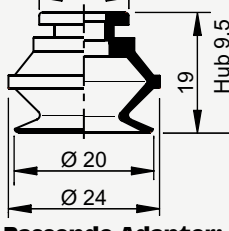


**Passende Adapter:**  
**VCA17:** 111.364

Ø 20

## Saugnapf V20B

**NBR:** 111.232  
**SIL:** 111.233  
**SIL (FDA):** 111.234

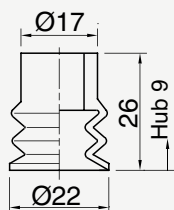


**Passende Adapter:**  
**VA20:** 111.336  
**VA20M:** 111.337

Ø 22

## Saugnapf VC33A3

**PVC:** 111.582  
**PU:** 111.583

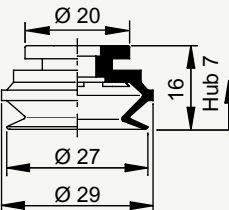
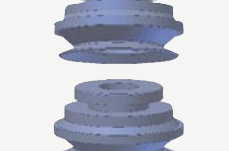


**Passende Adapter:**  
**VCA18:** 111.365

Ø 27

## Saugnapf V25B

**NBR:** 111.238  
**SIL:** 111.239  
**SIL (FDA):** 111.240

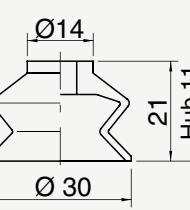


**Passende Adapter:**  
**VA30:** 111.339  
**VA30M:** 111.340

Ø 30

## Saugnapf VCB1

**PVC:** 111.556  
**PU:** 111.557

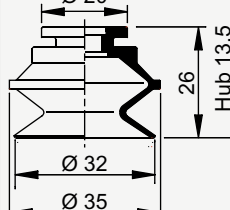


**Passende Adapter:**  
**VCA11:** 111.358

Ø 32

## Saugnapf V30B

**NBR:** 111.244  
**SIL:** 111.245  
**SIL (FDA):** 111.246

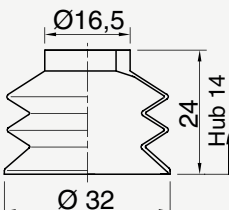


**Passende Adapter:**  
**VA30:** 111.339  
**VA30M:** 111.340

Ø 32

## Saugnapf VC33A2

**PVC:** 111.578  
**PU:** 111.579

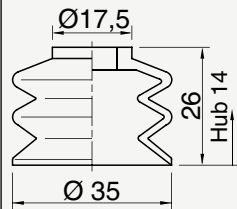


**Passende Adapter:**  
**VCA12:** 111.359

Ø 35

**Saugnapf VC33A1**

PVC: 111.574  
PU: 111.575

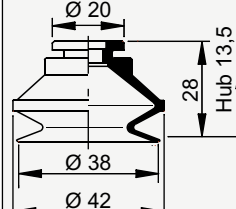


**Passende Adapter:**  
VCA12: 111.359

Ø 38

**Saugnapf V40B**

NBR: 111.250  
SIL: 111.251  
SIL (FDA): 111.252

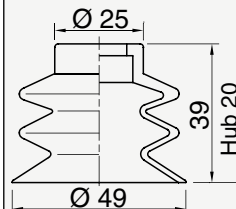


**Passende Adapter:**  
VA30: 111.339  
VA30M: 111.340

Ø 49

**Saugnapf VC32ABC**

PVC: 111.604  
PU: 111.605

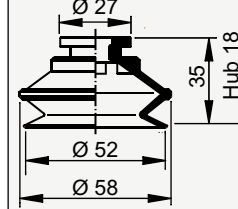


**Passende Adapter:**  
VCA16: 111.363

Ø 52

**Saugnapf V50B**

NBR: 111.256  
SIL: 111.257  
SIL (FDA): 111.258

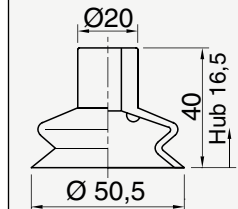


**Passende Adapter:**  
VA50: 111.342  
VA50M: 111.343

Ø 50,5

**Saugnapf VC32C**

PVC: 111.616  
PU: 111.617

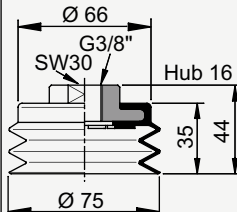


**Passende Adapter:**  
VCA6: 111.354

Ø 75

**Saugnapf V75B**

NBR: 111.262  
SIL: 111.263

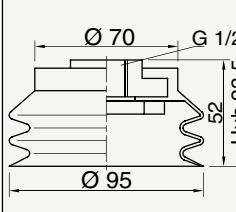


**Mit eingegossenem Adapter (Aluminium)**

Ø 95

**Saugn. VC104-3,75**

PVC: 111.622  
PU: 111.623

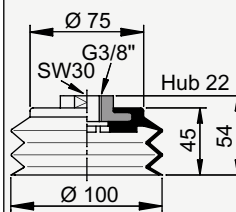


**Mit eingegossenem Adapter**

Ø 100

**Saugnapf V100B**

NBR: 111.265  
SIL: 111.266

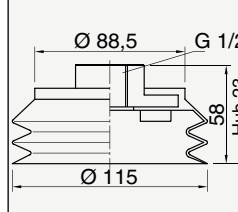


**Mit eingegossenem Adapter (Aluminium)**

Ø 115

**Saugn. VC104-4,5**

PVC: 111.625  
PU: 111.626

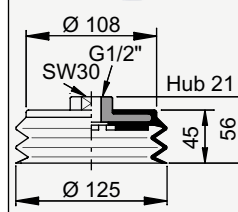


**Mit eingegossenem Adapter**

Ø 125

**Saugnapf V125B**

NBR: 111.269  
SIL: 111.269

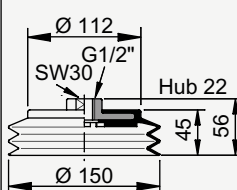


**Mit eingegossenem Adapter (Aluminium)**

Ø 150

**Saugnapf V150B**

NBR: 111.271  
SIL: 111.272



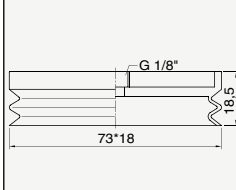
**Mit eingegossenem Adapter (Aluminium)**

**ovale Balg-Saugnäpfe**

18 \* 73

**Saugnapf VC188C1**

PVC: 111.712  
PU: 111.713

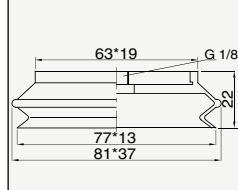


**Mit eingegossenem Adapter**

33 \* 77

**Saugnapf VC32-3,05 \* 1,3**

PVC: 111.716  
PU: 111.717

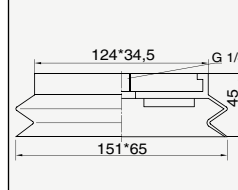


**Mit eingegossenem Adapter**

65 \* 151

**Saugnapf VC32-2,5 \* 6**

PVC: 111.720  
PU: 111.721



**Mit eingegossenem Adapter**

# Universal-Saugnapfe

Universal-Saugnapfe eignen sich besonders für ebene und leicht gewölbte Flächen. Sie gleichen Unebenheiten besser aus als Flach-Saugnapfe.

## Werkstoffe

- NBR:** Nitril, ölbeständig und verschleißfest, -20 bis +120°C  
**SIL:** Silikon, für höhere Temperaturen, -50 bis +220°C  
**SIL (FDA):** Silikon mit Lebensmittelzulassung  
**PVC:** verschleißfest, anschmiegsam, 0 bis +55°C  
**PU:** Polyurethan, ölbeständig, sehr elastisch 0 bis 65°C

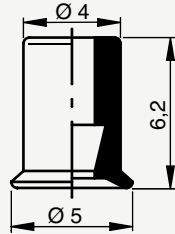
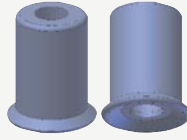
Passende Adapter finden Sie auf Seite 20 dieser Broschüre.



Ø 5

### Saugnapf V4U

NBR: 111.328  
SIL (FDA): 111.329

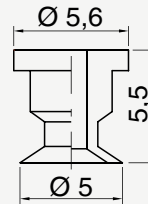


**Passende Adapter:**  
VA4: 111.333

Ø 5

### Saugnapf VCMini.200

PVC: 111.742  
PU: 111.743

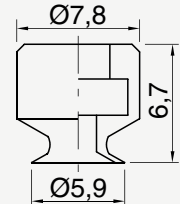
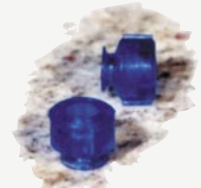


**Passende Adapter:**  
VCA2: 111.350

Ø 6

### Saugnapf VCNJ8

PVC: 111.764  
PU: 111.765

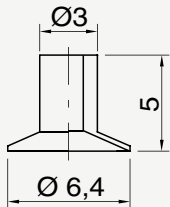


**Passende Adapter:**  
VCA5: 111.353

Ø 6,4

### Saugnapf VC167A

PVC: 111.728  
PU: 111.729

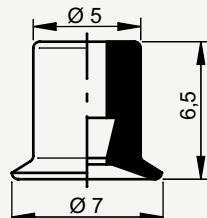
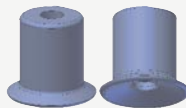


**Passende Adapter:**  
VCA2: 111.350

Ø 7

### Saugnapf V6U

NBR: 111.330  
SIL (FDA): 111.331

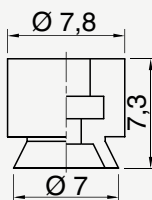


**Passende Adapter:**  
VA4: 111.333

Ø 7

### Saugnapf VCNJ12

PVC: 111.780  
PU: 111.781

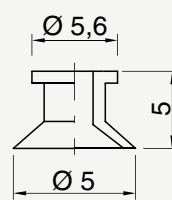


**Passende Adapter:**  
VCA4: 111.352

Ø 8

### Saugnapf VCMini

PVC: 111.738  
PU: 111.739

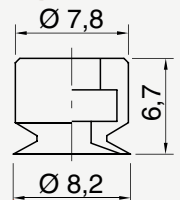


**Passende Adapter:**  
VCA1: 111.349

Ø 8,2

### Saugnapf VCNJ9

PVC: 111.768  
PU: 111.769

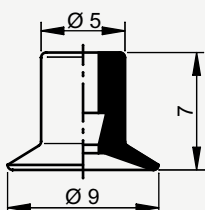
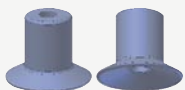


**Passende Adapter:**  
VCA5: 111.353

Ø 9

### Saugnapf V8U

NBR: 111.379  
SIL (FDA): 111.380

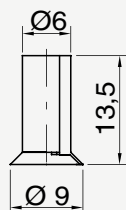


**Passende Adapter:**  
VA4: 111.333

Ø 9

### Saugnapf VC161C

PVC: 111.692  
PU: 111.693

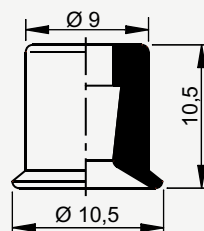
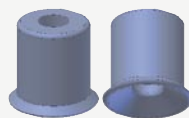


**Passende Adapter:**  
VA10: 111.334

Ø 10

### Saugnapf V10U

NBR: 111.325  
SIL: 111.326  
SIL (FDA): 111.327

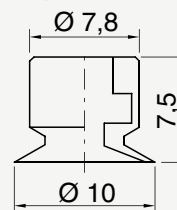


**Passende Adapter:**  
VA10: 111.334

Ø 10

### Saugnapf VCNJ10

PVC: 111.772  
PU: 111.773

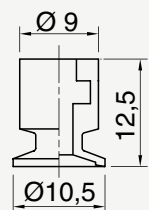


**Passende Adapter:**  
VCA5: 111.353

Ø 10,5

### Saugnapf VCNJ1

PVC: 111.746  
PU: 111.747

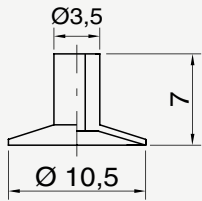


**Passende Adapter:**  
VA10: 111.334

Ø 10,5

**Saugnapf VC167**

PVC: 111.724  
PU: 111.725

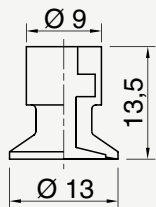
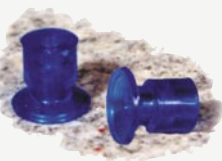


**Passende Adapter:**  
VCA2: 111.350

Ø 13

**Saugnapf VCU2**

PVC: 111.750  
PU: 111.751

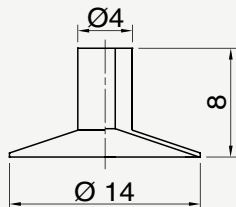


**Passende Adapter:**  
VA10: 111.334

Ø 14

**Saugnapf VC167C**

PVC: 111.734  
PU: 111.735

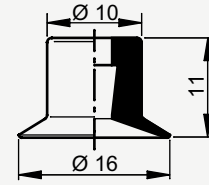
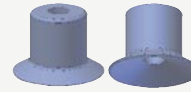


**Passende Adapter:**  
VCA2: 111.350

Ø 16

**Saugnapf V15U**

NBR: 111.382  
SIL (FDA): 111.383

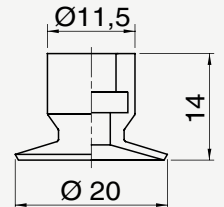


**Passende Adapter:**  
VA10: 111.334

Ø 20

**Saugnapf VC22**

PVC: 111.674  
PU: 111.675

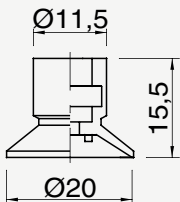


**Passende Adapter:**  
VCA11: 111.358

Ø 20

**Saugnapf VC119B**

PVC: 111.650  
PU: 111.651

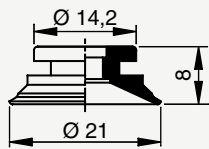
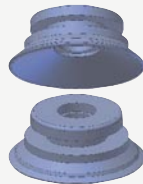


**Passende Adapter:**  
VCA11: 111.358

Ø 21

**Saugnapf V20U**

NBR: 111.385  
SIL (FDA): 111.386

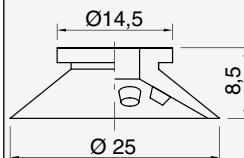
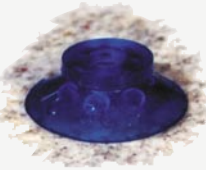


**Passende Adapter:**  
VA20: 111.336  
VA20M: 111.337

Ø 25

**Saugnapf VC36B**

PVC: 111.640  
PU: 111.641

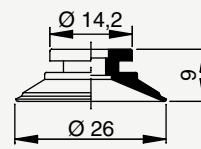
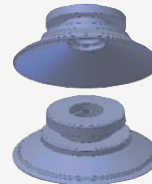


**Passende Adapter:**  
VA20: 111.336

Ø 26

**Saugnapf V25U**

NBR: 111.388  
SIL (FDA): 111.389

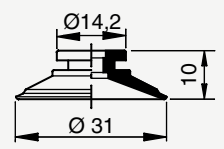
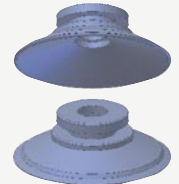


**Passende Adapter:**  
VA20: 111.336  
VA20M: 111.337

Ø 31

**Saugnapf V30U**

NBR: 111.391  
SIL (FDA): 111.392

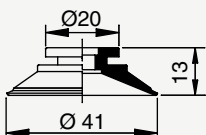
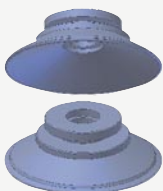


**Passende Adapter:**  
VA20: 111.336  
VA20M: 111.337

Ø 41

**Saugnapf V40U**

NBR: 111.394  
SIL (FDA): 111.395

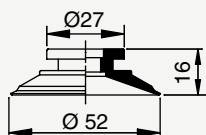
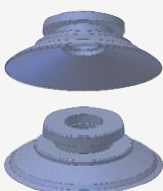


**Passende Adapter:**  
VA30: 111.339  
VA30M: 111.340

Ø 52

**Saugnapf V50U**

NBR: 111.398  
SIL (FDA): 111.399

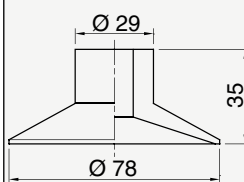


**Passende Adapter:**  
VA50: 111.342  
VA50M: 111.343

Ø 76

**Saugnapf VC30**

PVC: 111.696  
PU: 111.697

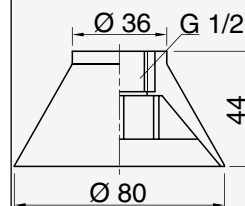


**Passende Adapter:**  
VCA15: 111.362

Ø 80

**Saugnapf VC72**

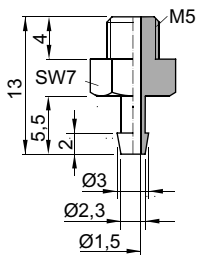
PVC: 111.654  
PU: 111.655



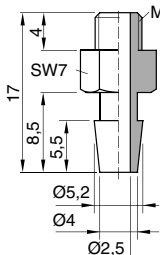
**Mit eingegossenem Adapter**

## Adapter: Steckadapter (Alu = Aluminium eloxiert, MSV = Messing vernickelt)

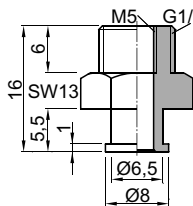
**Adapter VA4**  
MSV, Nr. 111.333



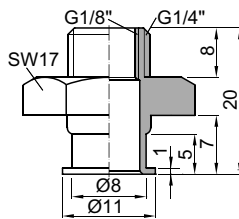
**Adapter VA10**  
MSV, Nr. 111.334



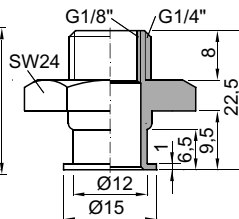
**Adapter VA20**  
Alu, Nr. 111.336



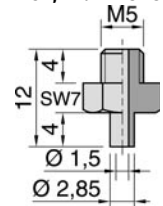
**Adapter VA30**  
Alu, Nr. 111.339



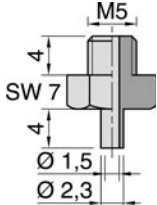
**Adapter VA50**  
Alu, Nr. 111.342



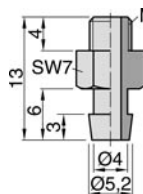
**Adapter VCA1**  
MSV, Nr. 111349



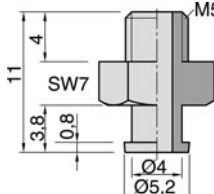
**Adapter VCA2**  
MSV, Nr. 111350



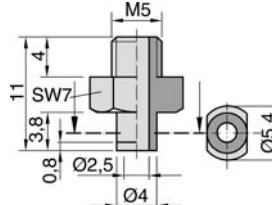
**Adapter VCA3**  
MSV, Nr. 111351



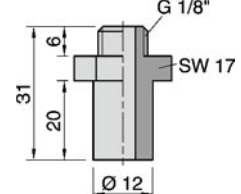
**Adapter VCA4**  
MSV, Nr. 111352



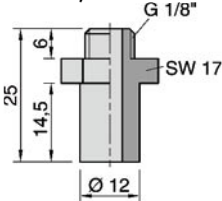
**Adapter VCA5**  
MSV, Nr. 111353



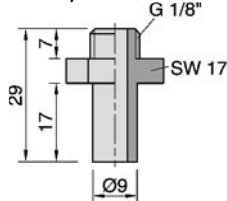
**Adapter VCA6**  
Alu, Nr. 111354



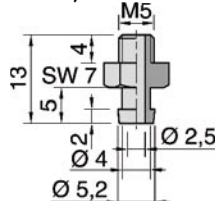
**Adapter VCA7**  
Alu, Nr. 111355



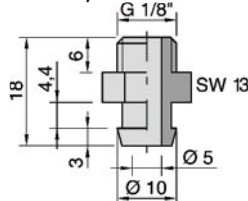
**Adapter VCA8**  
Alu, Nr. 111356



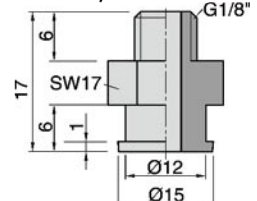
**Adapter VCA9**  
MSV, Nr. 111357



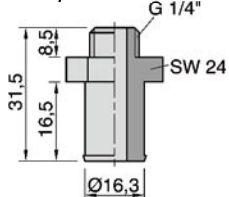
**Adapter VCA11**  
Alu, Nr. 111358



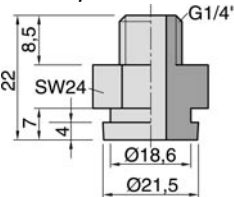
**Adapter VCA12**  
Alu, Nr. 111359



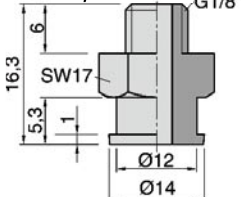
**Adapter VCA15**  
Alu, Nr. 111362



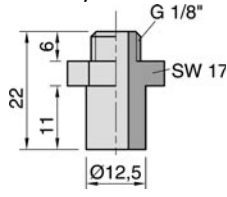
**Adapter VCA16**  
Alu, Nr. 111363



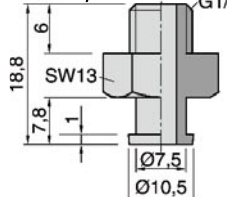
**Adapter VCA17**  
Alu, Nr. 111364



**Adapter VCA18**  
Alu, Nr. 111365

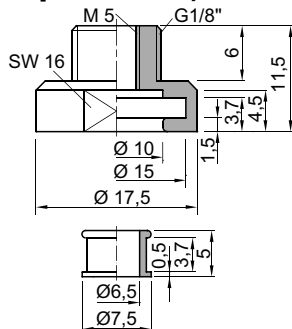


**Adapter VCA22**  
Alu, Nr. 111368

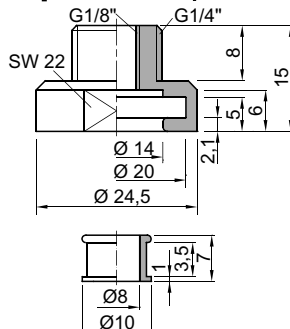


## Adapter: Mehrteilige Adapter (Aluminium eloxiert)

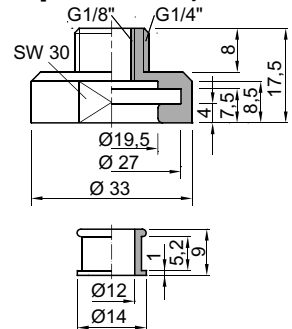
**Adapter VA20M, Nr. 111.337**



**Adapter VA30M, Nr. 111.340**

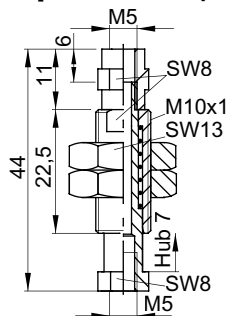


**Adapter VA50M, Nr. 111.343**

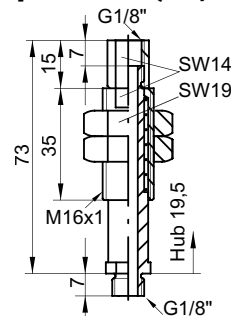


## Niveauekompensatoren

**Kompensator M5, Nr. 111.461**



**Kompensator 1/8", Nr. 111.462**



**Kompensator 1/2", Nr. 111.463**

